



# e-Foam<sup>®</sup> Rotary HD

## Jordco<sup>®</sup> EndoRing<sup>®</sup> High Density Foam Inserts



Jordco e-Foam Rotary HD (High Density) inserts are specially designed for cleaning rotary instruments. A rotating file secured in a hand piece can be placed directly into the high density foam to assist in cleaning debris from rotary flutes. Our Rotary HD foam minimizes tearing or shearing of the foam while a file is in motion.

### TECHNICAL SUMMARY

**e-Foam Rotary HD:** Single use open cell silver foam is specially designed to minimize tearing while using rotary files. During steam autoclave processing endodontic instruments can be inserted into the foam. Jordco's e-Foam Rotary HD is available in silver only.

Discover our complete line of quality Jordco<sup>®</sup> products at [www.jordco.com](http://www.jordco.com) or contact your dental supply dealer.

### EndoRing II Endodontic Instrument Family of Products

The EndoRing II organizer enables the clinician to directly place, store, measure and clean endodontic hand and rotary instruments within the operating field. It reduces the risk of cross-contamination and minimizes the passing of sharps between dentists and staff. Using the EndoRing II organizer helps make endodontic procedures safer and faster.



The EndoRing FileCaddy<sup>®</sup> organizer provides a unique bulk storage solution for all endodontic files. The clinician places multiple files securely into the special foam insert, closes the lid and steam autoclaves the entire EndoRing FileCaddy organizer.



### PRODUCT SPECS

**Name:** EndoRing e-Foam Rotary HD  
**REF:** ERFSDH-s: All Silver Pack (48 Silver)  
**Weight:** 2.2 oz

### PACKAGE CONTENTS

- 48 Single Use e-Foam Rotary HD Inserts

### FEATURES AND BENEFITS

#### Perfect for Rotary Files

Jordco's Rotary HD (high density) foam is specially designed with a higher shear strength than our regular e-Foam. This helps to minimize the tearing of the foam while the rotary file is in motion and being inserted into the foam. Our foam is made in the USA.

#### Superior Cleaning

While in motion, rotary files can be inserted into the HD Foam to rapidly and efficiently remove both dentin and pulpal debris.

#### Locking Tail Feature

The shape of tail portion of the insert has a positive locking feature to engage the EndoRing cup and prevent dislodgement while in use. The unique shape of the tail also helps to identify the Jordco band of HD foam insert.

#### Foam Can be Autoclaved Processed

Like Jordco's regular e-Foam, the Rotary HD Foam can be loaded with new or clean files and steam autoclaved processed. The open cells structure allows for easy penetration of steam.

#### Fits All Jordco EndoRings

Rotary HD Foam is designed to fit both the Original EndoRing<sup>®</sup> and the EndoRing<sup>®</sup> II products.

#### Single Use

Single use HD Foam helps prevent cross contamination and prevent accidental sticks. Used files can be placed into the foam insert for disposal in a sharps disposal container.

#### Faceted Working Surface

The top of the foam insert has three distinct facets that help organize files for ease of use during a procedure. Different tapers or diameter of files can be easily identified and located during a procedure.



**Jordco, Incorporated**  
 595 NW 167th Ave., Beaverton, Oregon 97006 USA  
 (800) 752-2812 [www.jordco.com](http://www.jordco.com)  
 Visit our website for patent and trademark information

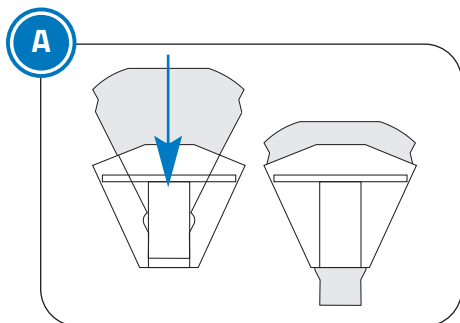
CE U.S. Patents D689190, 6036490, 8231734, D659837, 8231734B2, 8635735B2  
 e-Foam Rotary HD: Patent Pending

## Instructions for Use

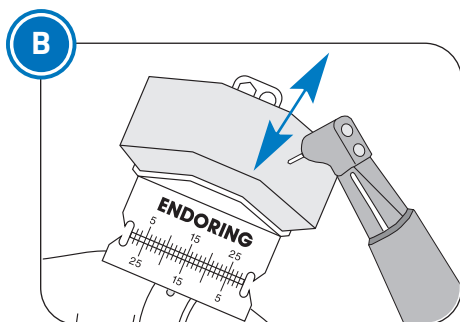
## e-Foam® Rotary HD

### File Prep

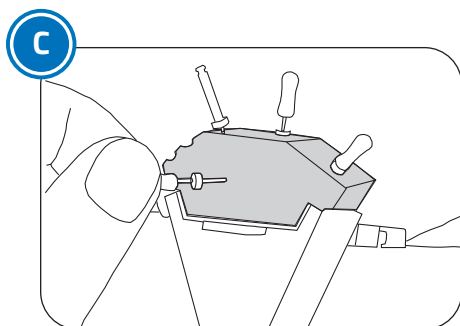
Always use new files or previously used instruments cleaned with ultrasonic cleaning prior to placing them into a new piece of e-Foam Rotary HD insert for steam autoclave processing. Files can be placed directly into a new single use e-Foam insert and then placed into a standard pack for steam autoclave processing. Avoid placing heavy objects onto the autoclave pack to avoid deforming the foam.



**A.** Place the e-Foam Rotary HD insert into the EndoRing cup. Pull the e-Foam insert out the bottom of the cup to seat the e-Foam insert securely in place and assure best clinical and cleaning performance of the e-Foam.



**B.** To clean rotary files, pass the rotating files vertically into the e-Foam Rotary HD insert at normal operating speeds of 3-400 RPM. Do not exceed 800 RPM. Rotary files clean best when inserted into the top of the e-Foam insert or into the docking area found on the back of the EndoRing II. Rotary file flutes normally clean with one short pass into the e-Foam insert. For best results avoid any excessive up and down file movement and/or placing the rotating files into the e-Foam insert at steep off vertical angles. Hand files can be vertically passed into the e-Foam insert 1-3 times to remove any debris.



**C.** The top of the e-Foam insert has 3 distinct faceted areas to aide in instrument organization. During treatment, store instruments in the e-Foam insert by arranging hand files, rotary files or other instruments directly into the top of the e-Foam insert. Assistants can use the docking area on the back of the EndoRing II to safely accept, transfer and store files.

**Dispose of the e-Foam Rotary HD insert after one use.**

### Processing Instructions

#### Single Use e-Foam Inserts

**2** DO NOT REUSE

Steam autoclave a new e-Foam Rotary HD insert **ONLY** prior to use. Do not reuse e-Foam inserts. Autoclaving **will not** remove bioburden left behind from prior usage. Unused or ultrasonically cleaned files may be placed in the e-Foam insert prior to processing. The e-Foam insert, along with files, may be placed in an FDA approved autoclave pouch/bag prior to processing. **Do not exceed temperature of 275°F (135°C).** To avoid deforming the e-Foam insert, do not load or stack items on top of the e-Foam insert during autoclave processing.