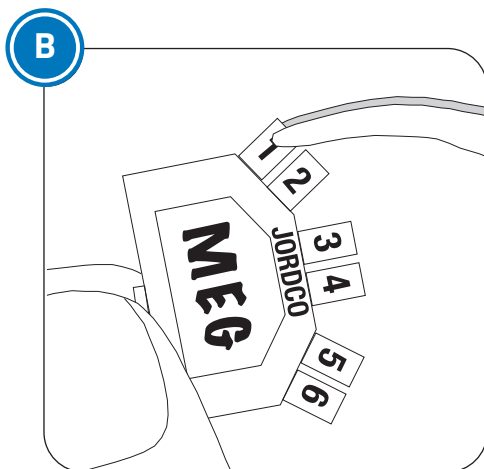


A. Select one of the 3 color tabs (red, blue or green) and remove from the dispensing wheel. Mark surface area using indelible ink pen.

Use marking surface to record patient names, dates, file sizes or any other important information.

Push post of EMT into EndoRing e-Foam insert securing it into place.



B. Use the six numbered tabs located along the top edge of the EMT to track instrument usage. Each tab can be snapped off using a hemostat or finger pressure.

Processing Instructions:

Precleaning Instructions: Rinse the EMT under tap water to remove gross and visible soils. Use a scrub brush if necessary to remove visible soils. Place the EMT in an ultrasonic bath with only an **enzymatic detergent** prepared to the manufactures directions. Fully immerse the EMT and soak for 1 minute. Then sonicate the parts for 5 minutes and remove and rinse for 15 seconds with tap water. Inspect for any soils and repeat if any soils are visible.

Steam Autoclave Processing Instructions: Place the EMT in an FDA approved autoclave pouch/bag. Using a steam autoclave, process the EMT at 250° F (121° C) for 30 minutes. Allow the bagged articles to dry for 30 minutes. During autoclaving, place any EMT components near center of the chamber.

Do not exceed temperature of 275° F (135° C).

Warning: Do not place the EMT components into Surgical Milk, "cold sterilizing solutions" or instrument dips prior to autoclaving. **Only use enzymatic ultrasonic detergents** when precleaning the EMT component.

ENDING® MARKING TABS

Please read before using the Ending Marking Tabs.

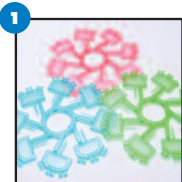


Jordco, Incorporated

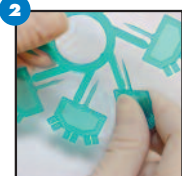
Beaverton, Oregon USA 97006

503/531-3904 TEL, 503/531-3757 FAX, 800/752-2812 toll free USA

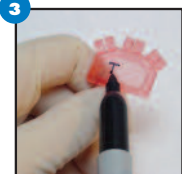
www.jordco.com



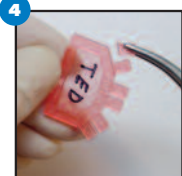
The Ending Marking Tabs are supplied in 3 different colors to aid in organizing file set-ups. Eight EMTs are supplied on a convenient wheel for easy dispensing.



To remove an EMT, gently twist it off the wheel.



Each EMT has a writing surface for information such as file types or patient name. It is best to use an indelible pen such as a Sharpie to withstand autoclave processing.



Each EMT has 6 numbered snap-away tabs located on the top. By using an instrument such as a hemostat, the tabs can be easily removed to identify the number of times a file set-up has been used.



The EMT is easily inserted into a foam insert prior to the next use.



The entire file set-up can be placed in an autoclave bag and be processed for the next use. Each EMT can withstand autoclaving up to 6 times.